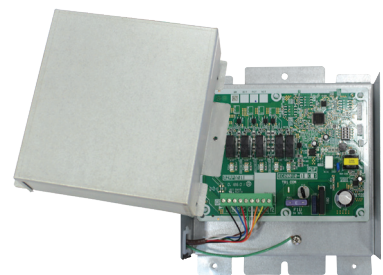




When a full system replacement is not a chosen option, a partial Goodman SD (Side Discharge) AC system is now a possibility. Also, the D24V Gateway offers a great comfort upgrade solution for homes with only heating/furnaces.

The D24V Gateway allows you to connect to any noncommunicating gas furnace when a communicating indoor unit is not a chosen option when installing with the Goodman SD condenser and coil. The D24V Gateway is compatible with the following:

- Goodman SD AC ODU
- CAPEA/CAPE/CHPE EEV Coil
- Goodman GTST thermostat
- Clean Comfort line of IAQ solutions compatible



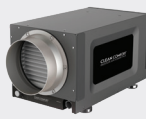
For more information on IAQ products visit www.cleancomfort.com.



GOODMAN GTST
CONNECTED THERMOSTAT



CLEAN COMFORT
ERV/HRV



CLEAN COMFORT
DEHUMIDIFIERS

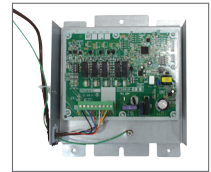


CLEAN COMFORT
HUMIDIFIERS



CLEAN COMFORT MEDIA AIR
CLEANER (MERV 11 AND 13)

Required Components



Goodman SD Air Conditioner

Tonnage	Model
1.5	GSXS6S1810
2.0	GSXS6S2410
2.5	GSXS6S3010
3.0	GSXS6S3610
3.5	GSXS6S4210
4.0	GSXS6S4810
5.0	GSXS6S6010

EEV A-Coil

Vertical	Horizontal
CAPEA1818*4*	CHPE2430B4*
CAPEA2422*4*	CHPE3636B4*
CAPEA3026*4*	CHPE3642C4*
CAPE4860*4*	CHPE3743C4*
CAPE4961*4*	CHPE3743D4*
	CHPE4860D4*

GTST smart thermostat

GTST-CW-WH-A

D24V Gateway

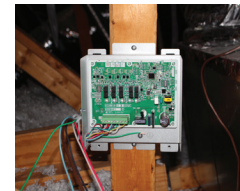
DTA119A71

Enjoy the fantastic features of Goodman SD inverter unitary outdoor unit! As low as 56dBA sound, compact footprint, lightweight, swing compressor, Blue Fin corrosion coating and multiple mounting options (wall, 4" from wall, patio, balcony, stackable). Learn more at www.goodmanmfg.com/products/air-conditioners/gsxs6

Quick Mount

Mount the D24V Gateway adaptor (DTA119A71) on a place which has sufficient strength and stability. To avoid damage to the DTA119A71, DO NOT mount the adaptor to any:

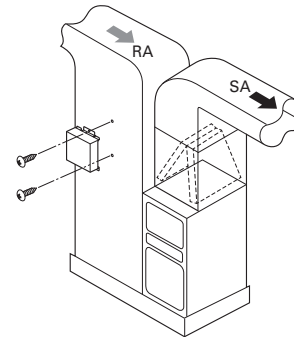
- Supply duct.
- In a place that has risk of vibration or water droplets.
- Directly to any air handler, furnace, hot water coil or evaporator coil in the area.



Dehumidification

Field selectable dehumidification settings to accommodated homeowner preferences

- It is recommended to use setting "B" as a starting point and adjust as applicable for region or customer preference. Refer to page 12 of the installation manual.



Compatible only with the following items: Goodman SD AC, CAPE, CHPE or CAPEA cased coils and Goodman GTST Connected thermostat. North and Southeast models only.

To learn more, visit www.goodmanmfg.com today!



A DAIKIN BRAND

Our continuing commitment to quality products may mean a change in specifications without notice.
 © 2023 **DAIKIN COMFORT TECHNOLOGIES NORTH AMERICA, INC.**
 Houston, Texas · USA · www.goodmanmfg.com